

Manage Large and Resilient Wired/Wireless Networks for up to 2000 nodes

NetMaster - Industrial NMS

The NetMaster Industrial Network Management System software is designed for network device discovery, group configuration, auto topology, VLAN view in topology, real-time monitor, and diagnostic. It secures network devices, physical links and resilient network in mission critical industrial networks. The NetMaster manages device configurations, firmware versions and upgrades, fault alert and event logs. A server-client operation is designed to ensure network reliability in large scale network up to 2000 nodes including wireless and 3rd party compliant devices. It can be freely download for 20 nodes trial.

NetMaster



Features & Benefits

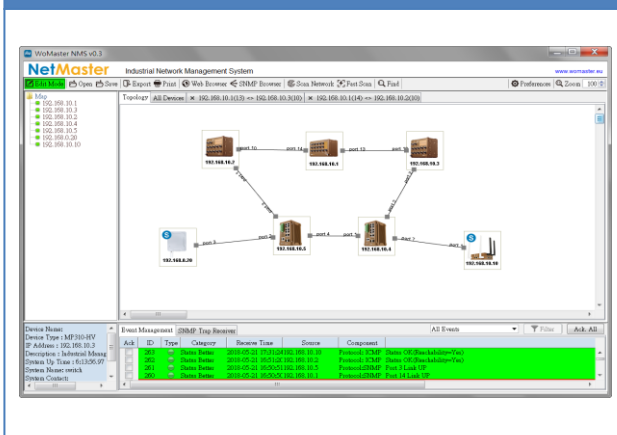
Network Discovery and Visualization

- Automatic discovery and intuitive visualization of network devices, wireless devices, physical link and network topology
- Real-time status of device availability and traffic performance for physical links
- Server-client operation to ensure network system reliability especially in large scale networks
- High scalability for up to 2000 network nodes by license upgrade
- Free download and permanently valid for 20 nodes trial
- VLAN view for VLAN network in topology

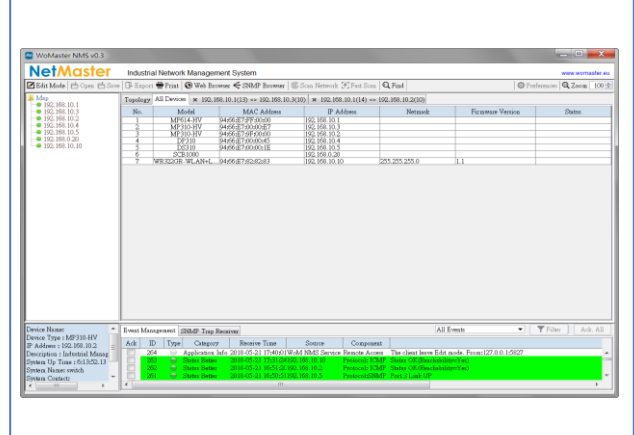
Configuration & Fault Management

- Centrally manage configurations and firmware versions
- Group IP Address assignment
- Group ERPS ring configuration & assignment
- MIB compiler and MIB browser for private MIBs and MIBs of 3rd party device
- Fault Alert and event logs including source IP filter, network error, login record and warning
- SNMP Trap receiver for all or specific IP addresses
- Multi-language support including English, Chinese & Russian

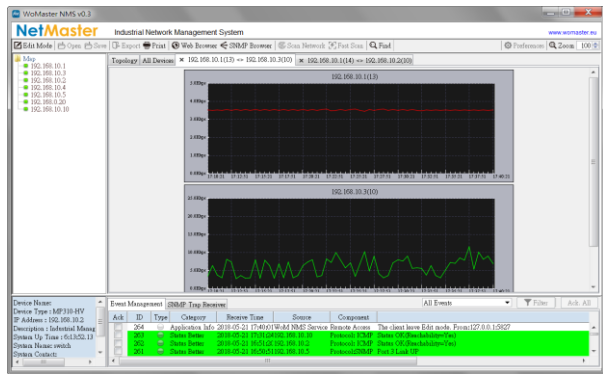
Automatic Discover and Intuitive Visualization of Network Devices and Topology



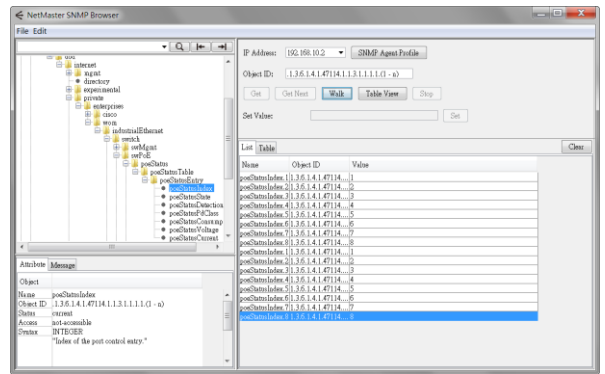
IP Device Lists, Device Information, Fault Alert and Event Logs



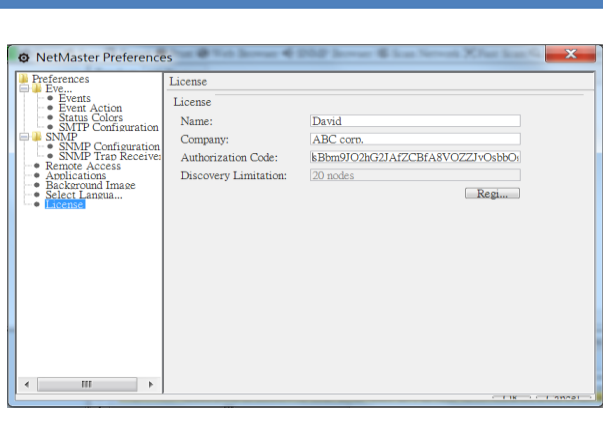
Physical Link Path Status and Monitoring



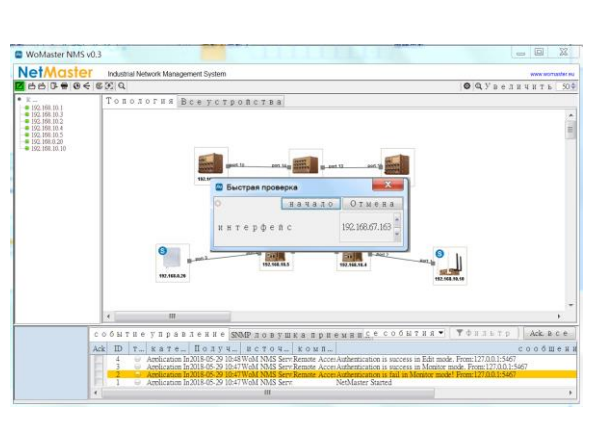
MIB Browser and Compiler for 3rd Party Device Management



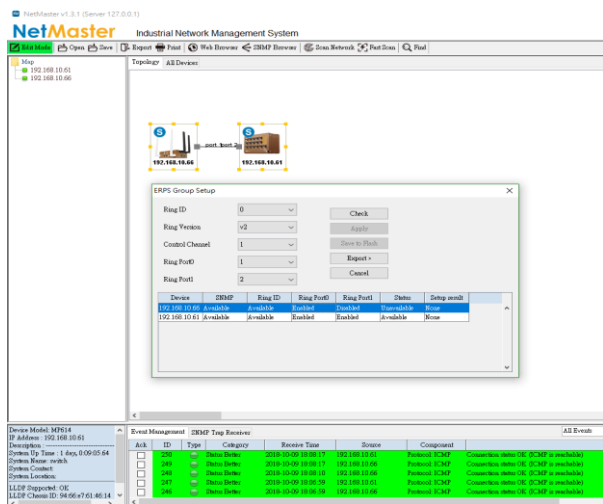
High Scalability for up to 2000 network nodes by license upgrade



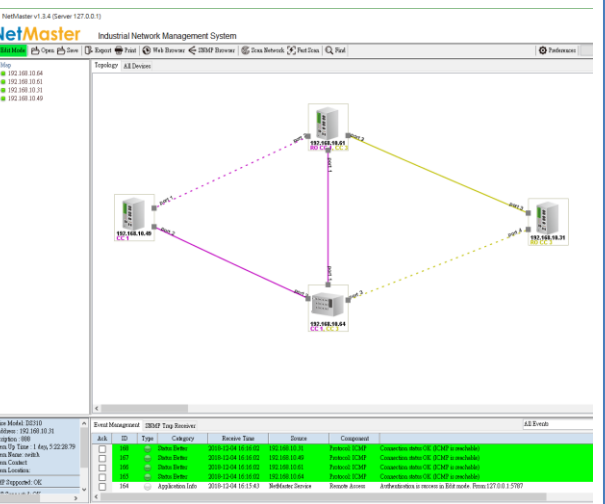
English, Chinese & Russian Interfaces



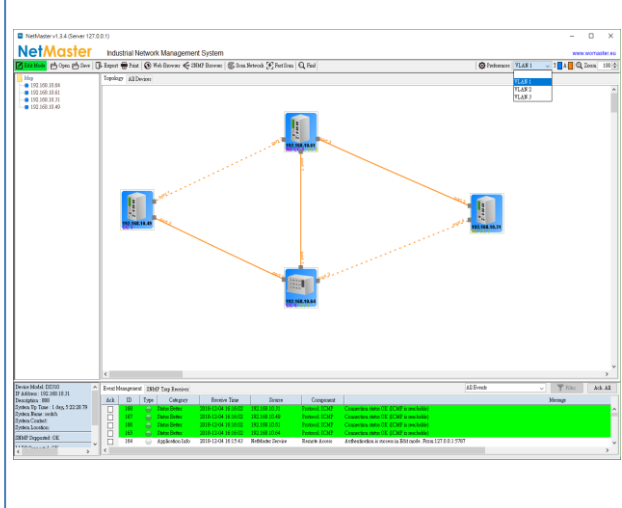
ERPS Group Settings for Ring ID, Ring Version, Control Channel, and Ring Ports



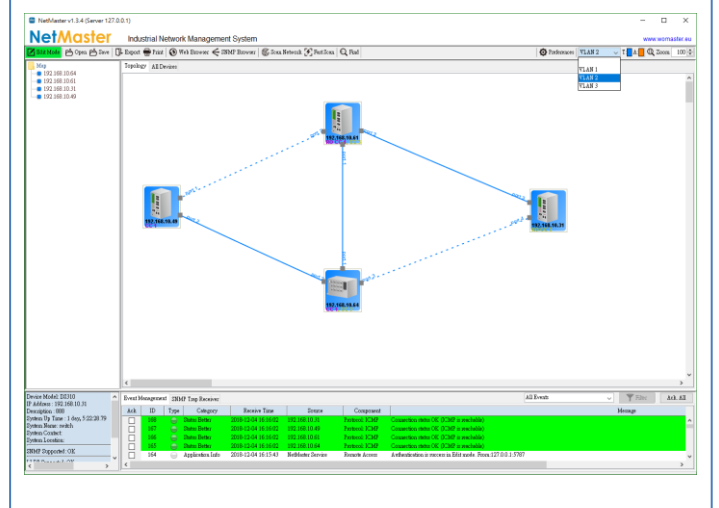
ERPS Visualization. Display ERPS Major ring and Sub ring in Purple/Yellow color



Devices, ports, and links with the VLAN ID will be colored-coded



Device in Blue, trunk port/access port in Blue/Orange, link in Blue/Orange/Grey for trunk/access/mixed link



Ordering Information

| Model Name | Description |
|-----------------------|---|
| NetMaster-20 | Industrial Network Management System software with a free license for 20 nodes |
| NetMaster-50 | Industrial Network Management System software with a license for 50 nodes |
| NetMaster-100 | Industrial Network Management System software with a license for 100 nodes |
| NetMaster-250 | Industrial Network Management System software with a license for 250 nodes license |
| NetMaster-500 | Industrial Network Management System software with a license for 500 nodes license |
| NetMaster-1000 | Industrial Network Management System software with a license for 1000 nodes license |
| NetMaster-2000 | Industrial Network Management System software with a license for 2000 nodes license |