

## Ultra-High-Speed Routing Switch for large-scale industrial networks

### RS752

#### Industrial 10G Layer 3 48G+4x10G SFP+ Gigabit Routing Switch

The RS752 is a high-performance industrial rackmount 10G Layer 3 Routing Switch equipped with 48 Gigabit ports and 4 10GbE SFP+ ports. Multicast routing at Layer 3 provides fast data packet flow between distributed IP subnets. Enhanced Cyber Security features including ACL for L2/L3/L4, IPv6 ACL for L3/L4, IP Source Guard, DAI, DHCP Snooping. With four 10GbE SFP+ ports, RS752 guarantees ultra-high speed and extended fiber distance, which make it an ideal backbone routing switch for large-scale industrial enterprise installations, where transmitting large amounts of data, voice, and high-quality video across networks is crucial.



#### Features & Benefits

##### 10G High Throughput Ethernet Switching

- 52-port Ethernet, including 48-port Gigabit Ethernet and 4-port 1/10GbE dual speed SFP+
- Outstanding throughput and flexibility for high-density and ultra high speed connection
- **131Mbps** maximum forwarding rate
- **176Gps** switching capacity
- **32K** MAC address table
- **4MBytes** packet buffer
- Store-and-Forward with non-blocking Switch Fabric

##### Management Features

- Auto-Installation for simple plug-and-play deployment
- Various configuration paths, including WebGUI, CLI filtering, Telnet/SSH, SNMP and RMON
- Network administrators can manage the switch through an industry-standard CLI and configure remotely through SNMP from MIB and private MIB, which significantly reduce operating costs
- LLDP topology control
- Software and Configuration download/upload: TFTP, FTP, SCP, SFTP
- Port Mirroring: SPAN, RSPAN

##### High availability from hardware and software perspectives

- Hot-swappable power supplies
- Out-of-band management reduce operating costs
- Up to 8 ports per link aggregation group (LACP) and up to 64 groups
- Up to 32 paths ECMP routing for load balancing and redundancy
- Multi-chassis Link Aggregation

##### Enhanced Cyber Security for Critical Applications

- ACL for L2/L3/L4, IPv6 ACL for L3/L4
- IP Source Guard, DAI, DHCP Snooping
- **802.1X/RADIUS**, TACACS+
- Port MAC secure learning
- Private VLAN/IP Security/Port Security
- Management IP filtering (SNMP/Web/Telnet/SSH)

##### Dynamic Routing with Redundancy Protection

- IPv4 and IPv6 routing: OSPF, OSPFv3, BGP4, and ECMP
- Multicast routing features for IGMP v1/v2/v3, PIM-DM/SM, MLD v1/v2 and PIM-DM6/SM6
- VRRP guarantees sustainable routing in a single point of failure



## Interfaces

### System LED

- 1 x Power
- 1 x Status

### Hot Swappable Power Module

### Gigabit Ethernet

- 48-port 10/100/1000M RJ45

### 10G SFP+

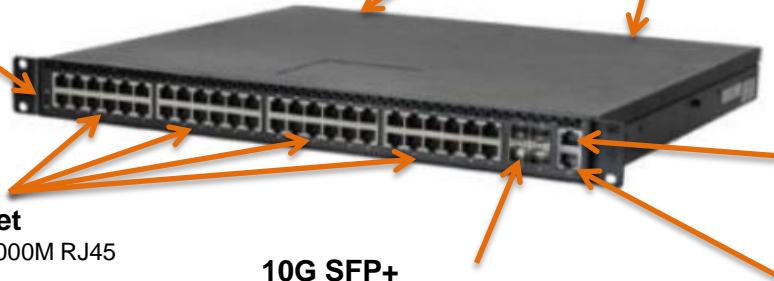
- 4-port 1/10G SFP

### RS232 Console

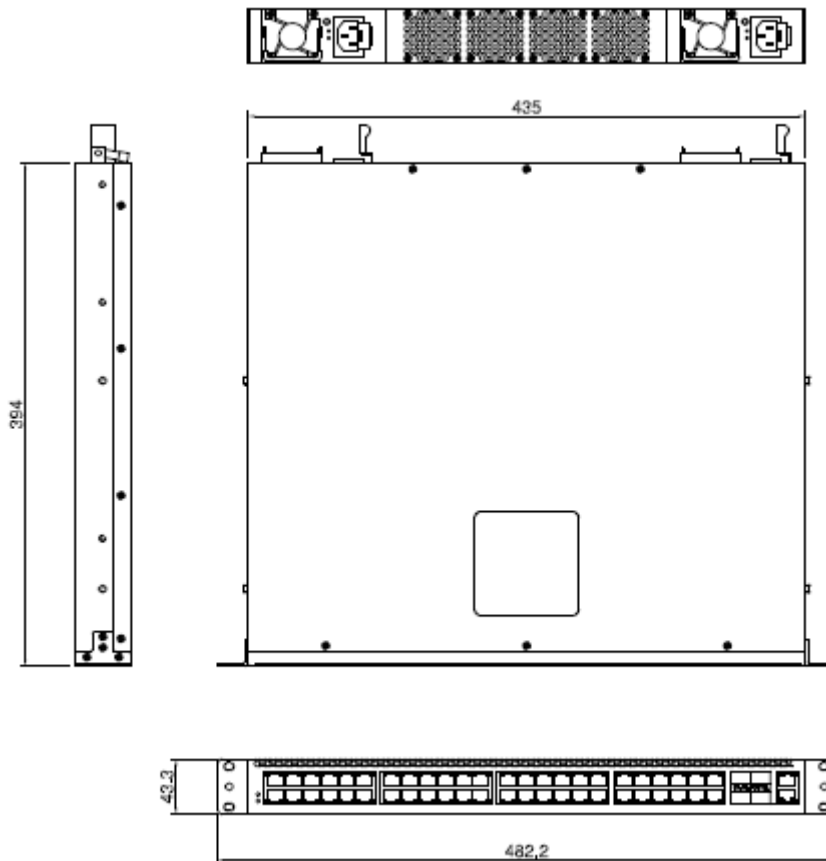
- 1-port RJ45

### Management Port

- 1-port RJ45



## Dimensions



Technology	
<b>Standard</b>	IEEE 802.3 10Base-T Ethernet
	IEEE 802.3u 100Base-TX Fast Ethernet
	IEEE 802.3ab 1000Base-T Gigabit Ethernet copper
	IEEE 802.3z Gigabit Ethernet Fiber
	IEEE 802.3ae 10 Gigabit Ethernet over fiber
	IEEE 802.3x Flow Control and back-pressure
	IEEE 802.1AB Link Layer Discovery Protocol (LLDP)
	IEEE 802.1p Class of Service (CoS)
	IEEE 802.1Q VLAN and GVRP
	IEEE 802.1Q Double Tag VLAN (QinQ)
	IEEE 802.1D Rapid Spanning Tree (RSTP)
	IEEE 802.1S Multiple Spanning Tree Protocol (MSTP)
	IEEE 802.3ad Link Aggregation Control Protocol (LACP)
	IEEE 802.1x Port based Network Access Protocol
Performance	
<b>Switch Technology</b>	Store and Forward Technology with Non-Blocking Switch Fabric
<b>Number of MAC Address</b>	32K
<b>Packet Buffer Memory</b>	4Mbytes
<b>Jumbo Frame</b>	12 Kbytes
<b>VLAN</b>	4K VLANs
<b>VLAN ID</b>	1~4093
<b>Class of Service</b>	8 Priority Queues per Port
Interface	
<b>Ethernet Port</b>	48 x 10/100/1000Base-T RJ45, Auto Negotiation 4 x 1/10G SFP+, Auto Negotiation/DDM
<b>System LED</b>	1 x Power: Green On 2 x PSU(Back): Normal (Green On), Power/Fan Abnormal (Amber On) 1 x System Status: Ready (Green On), Failure (Amber On)
<b>Ethernet Port LED</b>	Link (Green On), Activity (Green Blinking), Speed 1000M(Amber On), Speed 100M (Green On) , Speed 10M (Off)
<b>SFP LED</b>	Link (Green On), Activity (Green Blinking)
<b>Management Port</b>	1 x Out-of-Band 10/100/1000Base-T RJ45, Auto Negotiation
<b>Console</b>	1 x RS232 for System Configuration. Baud Rate: 115200.n.8.1
Power Requirement	
<b>Power Connector</b>	2 x AC Power Connectors for Redundant Power (Hot Swappable)
<b>Input Voltage</b>	100~240VAC, 50/60Hz
<b>Power Consumption</b>	95W (L2 64B line rate; 10G-SR optics, 100% fan duty)

Software	
<b>Management Interface</b>	Console: Command Line Interface (CLI) Management Port: Telnet, SNMP, CGI WebGUI
<b>Time Management</b>	Simple Network Time Protocol (SNTP) v4
<b>Network Management</b>	IPv4/IPv6, SNMP v1/v2c/v3/Trap, MIBs, RMON, LLDP, DHCP relay/client/Option 82, TFTP, System Log, SMTP
<b>Traffic Management</b>	Flow Control, Port Trunk/802.3ad LACP, VLAN, Private VLAN, GVRP, GMRP, QinQ, Class of Service, Traffic Prioritize, IGMP Snooping v1/v2/v3, Rate Control, Port Mirror
<b>L3 Routing</b>	IPv4/IPv6 routing, RIPv1/v2, RIPng, OSPF v2/v3, ECMP, BGP4, Policy-based Routing, VRRP, IGMPv1/v2/v3, Mroute, MLDv2, DVMRP, PIM-DM6/SM6
<b>Security</b>	IEEE 802.1X/RADIUS, Port MAC Secure Learning, Management IP, TACACS+, Management VLAN, SSH, SSL, ACL L2/L3/L4, IPv6 ACL L3/L4, IP Source Guard, DAI, DHCP Snooping
<b>Redundancy</b>	Rapid Spanning Tree Protocol (RSTP), Multiple Spanning Tree Protocol (MSTP), Multi-Chassis Link Aggregation Group (MC-LAG)
Mechanical	
<b>Installation</b>	19", 1U Rackmount
<b>Enclosure Material</b>	Steel Metal
<b>Dimension</b>	435 x 42.8 x 393 mm (W x H x D)
<b>Weight</b>	7.15kg with package
Environmental	
<b>Operating Temperature &amp; Humidity</b>	-10°C~55°C , 10%~95% Non- Condensing
<b>Storage Temperature</b>	-40°C~85°C
<b>MTBF</b>	>180,000 hours
<b>Warranty</b>	3 years
Standard	
<b>EMC</b>	EMI: IEC/EN 61000-3-2/3, IEC/EN55022 FCC Class A, CE Radiation, Conduction EMS:IEC/EN 55024 IEC61000-4-2/3/4/5/6/8/11
<b>Vibration</b>	IEC 60068-2-6/36
<b>Shock</b>	IEC 60068-2-27
<b>Free Fall</b>	IEC 60068-2-32



## Ordering Information

Model Name	Description
RS752-E	Industrial 48G+4 10G SFP+ Gigabit Routing Switch, dual AC Power, EU plug
RS752-U	Industrial 48G+4 10G SFP+ Gigabit Routing Switch, dual AC Power, US plug
	<b>Package List</b>
	1 x Product Unit (Without SFP transceiver)
	2 x Rackmount Ears
	1 x RS232 Console Cable
	2 x Power Cord
	1 x Quick Installation Guide



## Optional Accessory

Item	
SFP-4111-10	SFP+, 10Gbps, LC, single, DDM, 10KM, 0~70°C
SFP-4121-300M	SFP+, 10Gbps, LC, multi, DDM, 300M, 0~70°C